

MORTEN BO JENSEN, CHIEF DESIGNER AT VIPP

“In the making of our hotel ventures Vipp Loft and Vipp Chimney house, two vastly different spaces, we met two different needs for comfortable seating. One being a sofa with larger lounge elements and wide armrests for a spacious room, another being a more detailed and compact sofa designed for a smaller space.”

VIPP610 LOFT / VIPP632 CHIMNEY

Sofas



vipp

CONGRATULATIONS ON YOUR VIPP SOFA

A Vipp product is crafted from a design heritage dating back to 1939, where the quality of our products is measured on their ability to provide experiences out of the ordinary. Vipp's venture into architectural projects like the Vipp Hotel has prompted the desire to develop a line of Vipp furniture to inhabit these spaces. As a part of a complete furniture collection, this modular sofa adds a softer expression to our trademark material through more than 80 years – steel. The combination of crisp upholstery and a solid steel frame comprises both the industrial heritage and a newfound desire to explore more organic and soft materials.

Please take a seat.

We hope you will enjoy your Vipp sofa for many years to come.

Kasper Egelund

CEO of Vipp and grandson of founder, Holger Nielsen

PRODUCT DESCRIPTION

The Vipp sofa is a modular sofa constructed around a solid birch and plywood interior frame and fitted with a mix of foam, polyfibre and feathers for a comfortable seating experience. The black powder-coated legs are made of steel, and a variety of different upholsterys from leather to textured fabrics are available.

Modular sofa system

Vipp's sofa system of configurable elements allows for endless variations. The Vipp sofa can be composed from 7 different modules, giving the opportunity to customise the size and shape of your sofa according to the surrounding environment. One cushion per unit is included.

Materials

A solid wooden frame and legs of black powder-coated steel with polished stainless steel feet. Upholstered in leather or textile.

CARE INSTRUCTIONS

Leg frame

Keep powder-coated surfaces clean and dry. Use a lint free cleaning cloth or a soft brush with warm water and a mild detergent. Finish by wiping down the surface with a dry cloth.

Upholstery

We recommend caring for the upholstery of your Vipp sofa to ensure its long-lasting appeal and appearance. A few simple directions will help preserve the upholstery's natural beauty for many years to come.

Leather

Avoid exposing the upholstery to direct sunlight, extreme heat or sharp objects.

Use a clean, dry cloth to absorb spills.

Use a vacuum cleaner with a soft brush for monthly dust removal.

Do not use ammonia, oils, polishes, varnishes, sulphates, brown soap or any detergents containing chloride or iron.

Buttons from jeans and the like may damage the surface.

Note that the leather may display light colour variations and fade over time.

For thorough cleaning, clean the upholstery twice a year by using foam from soap flakes.

Cleaning with soap flakes:

1. Use ½ deciliter of white or natural soap flakes for a liter of hot distilled water. Whip the soap flakes into the water. Never use soap flakes containing bleach or perfume.
2. When the water reaches room temperature, apply the foam all over the upholstery with a soft cloth. Only use the foam, not the water, and avoid soaking the leather.
3. When the leather is dry, wipe it with a soft, dry cotton cloth.

Wool, cotton and polyester

Vacuum clean with low suction using a soft brush to preserve the fabric's colour and appearance.

Vacuum clean carefully and always brush in the direction of the pile and not against it.

Avoid exposing the upholstery to direct sunlight, extreme heat or sharp objects.

Avoid pulling or cutting loose threads. Push them back into the fabric with a blunt object.

Use a piece of white paper towel to dry wet spots.

Use lukewarm water on a terry towel, optionally with a mild neutral cleaning agent added.

Test on a less visible spot before applying a cleaning agent to the entire surface

Use only small quantities of cleaning agent at a time and dry up with absorbent paper.

Avoid rubbing the fabric or the stain.

Avoid using air fresheners as this can cause a chemical reaction on the fabric.

Buttons from jeans and the like may damage the surface.

Note that denim can give off colour on a light fabric (beige, sand, white etc.). This is not a reason for a claim.

WARRANTY

Vipp offers warranty on your product according to national laws and regulations. The warranty does not cover defects or damage caused directly or indirectly by misuse or poor maintenance, violence or manipulation.

The warranty presupposes rightful use as described in Vipp's care instructions, which can be found in this folder or under the specifications of each product at vipp.com. In case of a defective product, please contact your place of purchase.

For questions regarding your Vipp product:

Europe | info@vipp.com | +45 4588 8800

US | vippusa@vipp.com | +1 (917) 580 2148

MAINTENANCE GUIDE

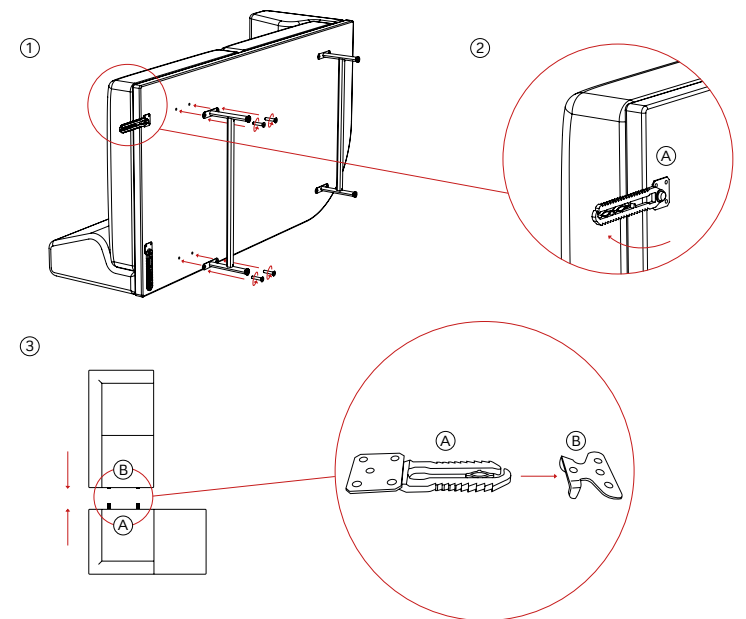
Loose pillows and cushions may have been displaced during transit. Before correcting their location, fluff the pillows to restore the fullness of the feather filling. By repeating this manoeuvre daily, both pillows and back-cushions will maintain optimum density and elasticity of the filling and preserve an ideal appearance. If wrinkles occur, gently smooth them out by hand.

Please note that changes in foam resistance will occur during use, therefore back and seat cushions will become softer.

Follow the above instructions to reposition loose filling that has moved, and vary seating positions.

ASSEMBLY GUIDE

- ① Fasten each leg to the sofa frame with the included four screws. Use a hex key to tighten the screws. The legs may need to be re-tightened for stability after some use.
- ② Start by turning the connectors (A) outwards.
- ③ To attach one module to another, click together the connector (A) and the bracket (B). Make sure these two components face each other and are completely aligned. Then click together the two components.



IMPORTANT

For reasons of fire safety and to prevent colour fading, avoid placing your sofa in direct sunlight or close to radiators and heating devices.