

GUIDELINE

# Use of Vipp 3D files

vipp

## **GUIDELINE FOR USE OF VIPP 3D FILES**

### **NON-PARTNERS:**

All copyright on files and photos owned by Vipp.

No use allowed without written consent from Vipp.

### **PARTNERS:**

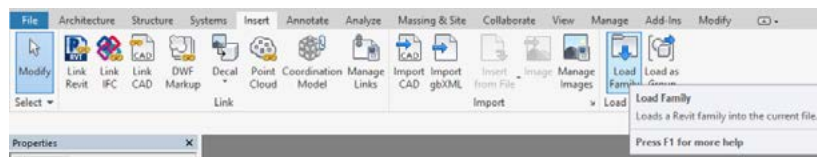
Download and use of files and photos is accepted without written consent from Vipp.

## **VIPP REVIT FILES**

Loading of Families into Revit

Use "Load Family" in the "Insert" tab to load Families.

Locate and select the desired Families, and press "Open" to add them to the current project.

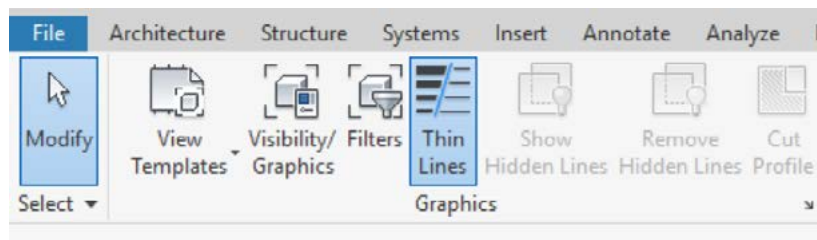


## **FAMILY CATEGORIES**

Vipp Families are currently located in "Casework", "Furniture" and "Lighting Fixtures", corresponding to the type of furniture.

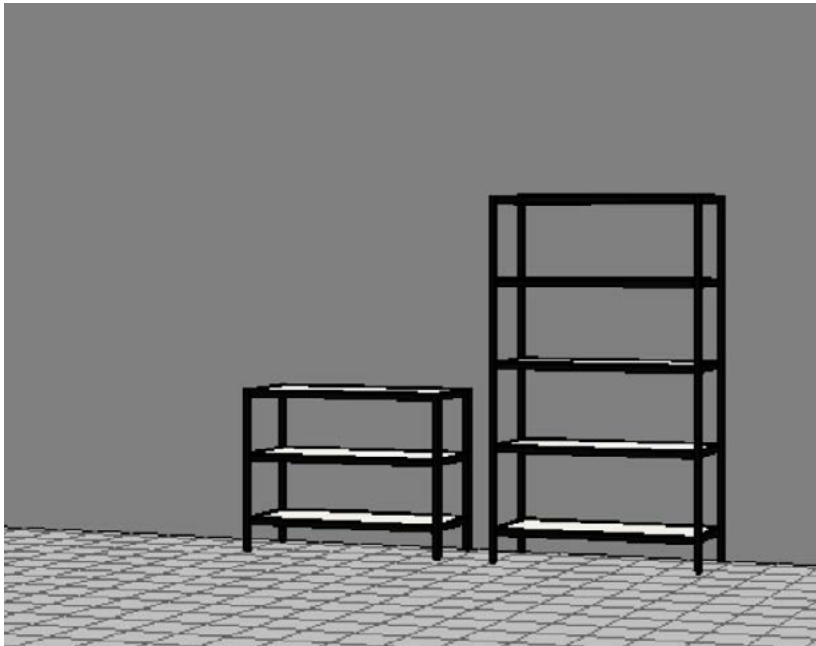
## **VISUAL STYLE**

All Vipp Revit Families are made without any difference in visual style, to always represent the product as intended.

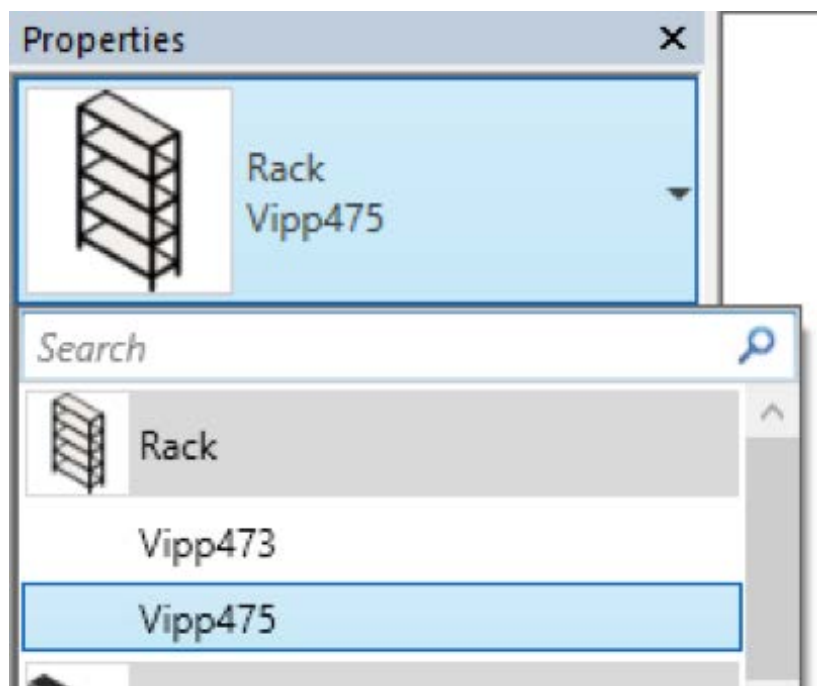


## **CHANGES WITHIN A PRODUCT RANGE**

Some Families contain more than one product as well as variants. After adding the Family to a project, select the Family you want to change (in this example the rack Vipp475).



When one or more types within the same Family are selected, the current type is shown in "Properties". If multiple types are selected, the family name is shown including "Multiple Types Selected". Change type by pressing in the area where the selected types are shown and select the desired version.



It is possible to change one type to a completely different type, as long as it is in the same Family category.